

OnSite™ Battery Controller

The OnSite Battery Controller provides status monitoring and alerts for Lithium Iron Phosphate batteries



Features

- Status and history of battery operation in simple to use format
- Export capability of history to a CSV file
- SNMP V1 support
- Preconfigured SNMP Traps
- Mounting brackets for 1 RU horizontal rack mounting or vertical mounting on the outside of a rack rail
- In-network communication - no need for internet connection or external data monitoring services

Applications

Lithium Iron Phosphate batteries from Narada are widely used in telecommunications applications. The OnSite Battery Controller interfaces directly with these batteries and provides an Ethernet interface for remote access to status and history. In addition, the Controller has several preconfigured SNMP

traps alerting users to low state of charge, time until discharge, low temperature or high temperature. Levels for these traps may be easily modified for greater flexibility.

The OnSite Advantage

The OnSite Battery Controller is temperature hardened and is installed near the batteries. Every two minutes, the status of the batteries is verified and recorded.

The Controller communicates through the user's network and obtains an IP address by default through DHCP, although it may be configured with a static IP address as well. All data resides on the controller and may be viewed or exported to a CSV file for analysis.

Because the Controller supports SNMP, integration with network monitoring systems such as Solar Winds is also supported.

Experience the peace of mind that comes from knowing your batteries are being monitored.

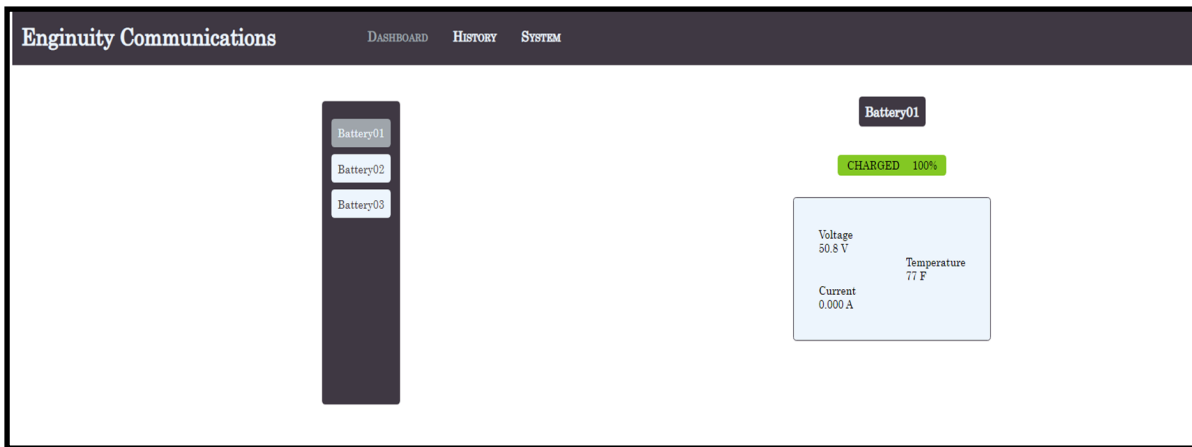
Ordering Information

| ORDERING CODE | Description |
|----------------|---|
| OS-CTRL-B002 | OnSite Battery Controller includes <ul style="list-style-type: none"> • Controller device • 48V to 12 V power adapter • Power cables |
| OS-CTRL-HRZ-19 | 1RU rack mounting |
| OS-CTRL-VERT | Vertical rack mounting for outside rack rail |

Specifications

| Environmental | | Electrical | |
|-----------------------|-------------|--------------------|---|
| Operating temperature | -10 to 60°C | 48V to 12V adapter | Fused Input: 36-72 VDC; 0.45 A typical Output: 12 VDC +/- 10%; 1.25A max |
| Storage temperature | -20 to 85°C | | |

Dashboard



History Screen

Enginuity Communications DASHBOARD HISTORY SYSTEM

History

| Timestamp | Shelf Name | Shelf ID | Voltage (mV) | Current | SOC | Capacity (mAh) | Num of Temps | Temp1 (F) | Temp2 (F) | Temp3 (F) | Temp4 (F) | Temp5 (F) | Temp6 (F) | Cycle Count | SOH | RS-485 Fail | Charge MOS Error | Discha |
|---------------------|------------|-----------|--------------|---------|-----|----------------|--------------|-----------|-----------|-----------|-----------|-----------|-----------|-------------|-----|-------------|------------------|--------|
| 08/17/2022 09:28 AM | Battery03 | Battery03 | 51031 | 0 | 100 | 89910 | 6 | 72 | 73 | 72 | 72 | 77 | 75 | 0 | 100 | off | off | |
| 08/17/2022 09:28 AM | Battery02 | Battery02 | 51178 | 0 | 100 | 90770 | 6 | 73 | 73 | 73 | 73 | 79 | 75 | 0 | 100 | off | off | |
| 08/17/2022 09:28 AM | Battery01 | Battery01 | 50793 | 0 | 100 | 90500 | 6 | 72 | 72 | 73 | 73 | 77 | 75 | 0 | 100 | off | off | |
| 08/17/2022 09:26 AM | Battery03 | Battery03 | 51037 | 0 | 100 | 89910 | 6 | 72 | 73 | 72 | 72 | 77 | 75 | 0 | 100 | off | off | |
| 08/17/2022 09:26 AM | Battery02 | Battery02 | 51181 | 0 | 100 | 90770 | 6 | 73 | 73 | 73 | 73 | 79 | 75 | 0 | 100 | off | off | |
| 08/17/2022 09:26 AM | Battery01 | Battery01 | 50796 | 0 | 100 | 90500 | 6 | 72 | 72 | 73 | 73 | 77 | 75 | 0 | 100 | off | off | |
| 08/17/2022 09:24 AM | Battery03 | Battery03 | 51040 | 0 | 100 | 89910 | 6 | 72 | 73 | 72 | 72 | 77 | 75 | 0 | 100 | off | off | |
| 08/17/2022 09:24 AM | Battery02 | Battery02 | 51186 | 0 | 100 | 90770 | 6 | 73 | 73 | 73 | 73 | 79 | 75 | 0 | 100 | off | off | |
| 08/17/2022 09:24 AM | Battery01 | Battery01 | 50800 | 0 | 100 | 90500 | 6 | 72 | 72 | 73 | 73 | 77 | 75 | 0 | 100 | off | off | |
| 08/17/2022 09:22 AM | Battery03 | Battery03 | 51044 | 0 | 100 | 89910 | 6 | 72 | 73 | 72 | 72 | 77 | 75 | 0 | 100 | off | off | |
| 08/17/2022 09:22 AM | Battery02 | Battery02 | 51192 | 0 | 100 | 90770 | 6 | 73 | 73 | 73 | 73 | 79 | 75 | 0 | 100 | off | off | |
| 08/17/2022 09:22 AM | Battery01 | Battery01 | 50803 | 0 | 100 | 90500 | 6 | 72 | 72 | 73 | 73 | 79 | 75 | 0 | 100 | off | off | |
| 08/17/2022 09:20 AM | Battery03 | Battery03 | 51049 | 0 | 100 | 89910 | 6 | 72 | 73 | 72 | 72 | 77 | 75 | 0 | 100 | off | off | |
| 08/17/2022 09:20 AM | Battery02 | Battery02 | 51195 | 0 | 100 | 90770 | 6 | 73 | 73 | 73 | 73 | 79 | 75 | 0 | 100 | off | off | |