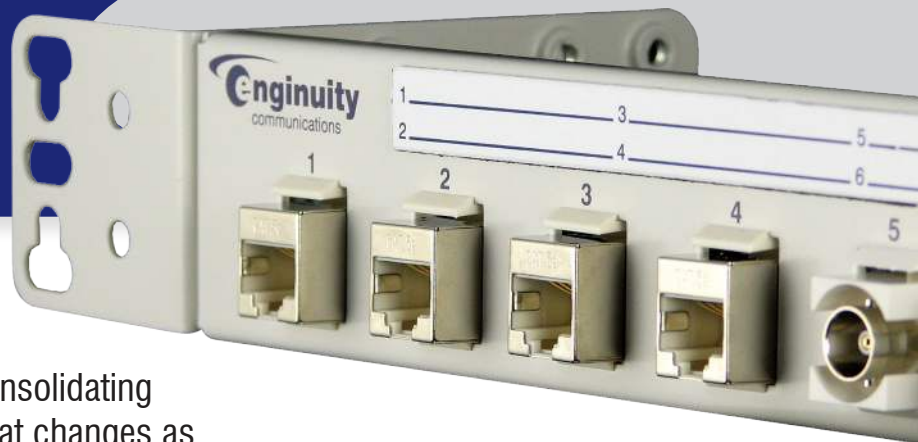


SIP Series

Easily manage all of your broadband connections.



The Service Interface Panel (SIP) is a modular solution for organizing and consolidating service handoffs – copper or fiber – that changes as quickly as your needs do.

Key Features

- Snap-in couplers for Ethernet, ATM, T1, DS3, and other high-speed copper/fiber services
- Panel sizes from 6-port to 36-port
- Adjustable 19" or 23" rack mount or wall mount
- Heavy duty metal construction
- Preconfigured systems also available

Choose Your Interface

Each SIP model uses snap-in Keystone couplers for interconnection to twisted pair, coaxial, or fiber cables. Front and rear connectors on each coupler allow service providers to offer a convenient customer access point while keeping network terminations groomed and secure behind the panel. The flexibility of SIP makes it easy to create configurations that fit precisely to your applications.



Adapt to Changes

Changing or adding service becomes simple with connectors that take only seconds to install, move, or replace. To scale with capacity needs, panels are offered in 1RU and 2RU heights for efficient racking and stacking. Cable management accessories are also available to keep wiring orderly and maintainable.

Connect With Confidence

High quality installations require interfaces that are reliable, durable, and thoughtfully designed. All SIP products feature high quality materials, solid construction, and long-life performance that you can rely on as your critical link. Installers will also appreciate the multiple mounting configurations that the SIP accommodates.

SIP Series

Specifications



Model	SIP-600	SIP-1200	SIP-1400
Capacity	6 port	12 ports	14 ports
Height	1.75" (1RU)	1.75" (1RU)	1.75" (1RU)
Width	10"	19" or 23", adjustable	19" or 23", adjustable
Depth	4" to 6", adjustable	4" to 6", adjustable	4" to 6", adjustable
Weight	0.9 pounds	1.8 pounds	1.6 pounds



Model	SIP-2400	SIP-3600
Capacity	24 ports	36 ports
Height	3.5" (2RU)	3.5" (2RU)
Width	19" or 23", adjustable	19" or 23", adjustable
Depth	4" to 6", adjustable	4" to 6", adjustable
Weight	2.4 pounds	2.4 pounds

Couplers

Part Number	Front	Rear
CPL-5E-1	Cat5e RJ45	Cat5e RJ45
JCK-5E-KRO-1	Cat5e RJ45	KRONE®/110
CPL-6S-1	Cat6e RJ45	Cat6e RJ45
CPL-BNC-1	Coax BNC	Coax BNC
CPL-F81-1	Coax F81	Coax F81
CPL-LC-1	Fiber LC	Fiber LC
CPL-SC-1	Fiber SC	Fiber SC
CPL-SC-APC-1	Fiber SC-APC	Fiber SC-APC
CPL-ST-1	Fiber ST	Fiber ST

NOTE: RJ45 jacks are shielded and carry all 8 conductors (can be used as RJ48). KRONE is a registered trademark of ADC.

Please ask an Engenuity sales associate about our selection of Ethernet and fiber cables.

Accessories

Part Number	Description
SIP-CVR-1	Blank insert for coupler slot
DRNG-U-1	Universal D-Ring (rail mount)
DRNG-1	D-Ring for SIP-1200/2400
SIPT-1	Cable tray for SIP-1200/2400

Applications

- Remote cabinets
- Cell sites
- Data centers
- MDUs
- Commercial buildings

