

Cleaning Adapter for EVOLV® Connectors

Model ENG-CAEVLV

1. OVERVIEW

The ENG-CAEVLV is an adapter for the Engenuity fiber connector cleaning tool ENG-SS-250 (Senko SCK-SS-250) that supports the click style cleaning of EVOLV® terminal connectors. The adapter may be added to the existing ENG-SS-250 tether for easy storage as shown in Figure 1. To use, the adapter is placed onto the guide of the ENG-SS-250 cleaning tool before being inserted into an EVOLV terminal's connector port for cleaning. The ENG-SS-250 tool may also be used to clean SC, FC, and ST connectors.

Document Status

This release adds detail to Section 3.

Product Features

- Provides alignment of click style cleaner to internal connections of the EVOLV fiber terminal block
- Attaches to Engenuity ENG-SS-250 fiber optic cleaner tether for easy storage
- Keyed to guide insertion into EVOLV terminal

2. INSTALLATION

Adding the ENG-CAEVLV to the ENG-SS-250 tether

See Figure 1

- ① Feed the provided cable tie through the ring of the adapter.
- ② Close tie tightly around the ENG-SS-250 tether
- ③ Cut off excess cable tie.

3. USE

CAUTION

- This product is intended for use as a cleaner for optical connector ferrule. Do not use for any other purpose.
- Do not use this product for cleaning lens type optical ports such as transceivers or reception ports of optical measurement equipment.

Ensure **ARROWS** are aligned with **CLEAN**, Figure 2.

Follow company practices for connector inspection.

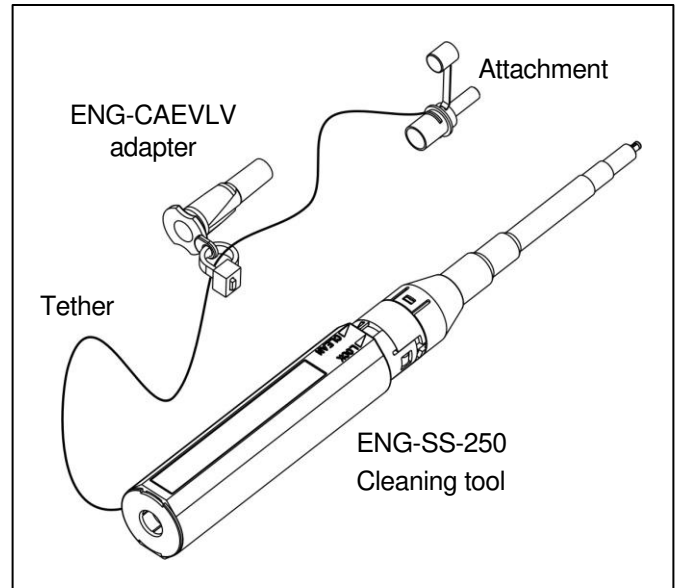


Figure 1. ENG-CAEVLV attached to tether of ENG-SS-250 cleaning tool

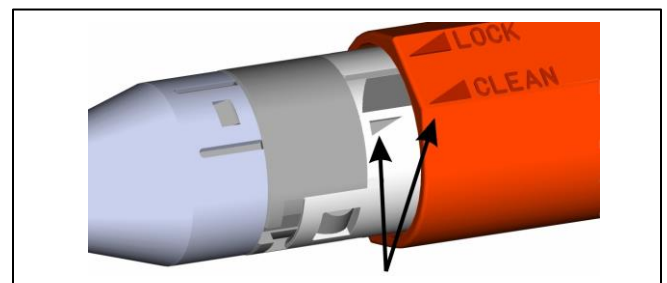


Figure 2. Align arrows with CLEAN

Cleaning the PUSHLOK® port on EVOLV terminal

- ① Slide the adapter onto the GUIDE, Figure 3. The adapter is keyed to match the port.
- ② Insert the cleaning tool into the terminal housing's port until the adapter's rim is flush with the terminal housing, Figure 4.
- ③ Push the cleaning tool fully to clean the internal connection.

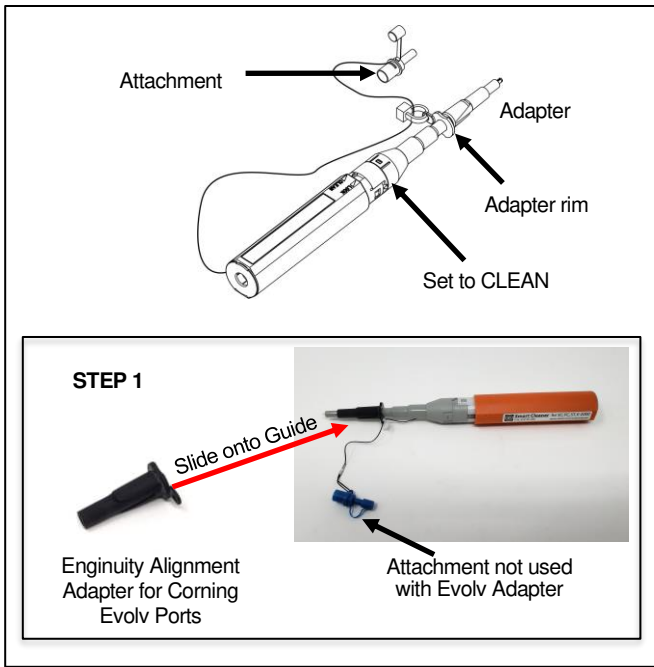


Figure 3. ENG-CAEVLV adapter installed on cleaning tool

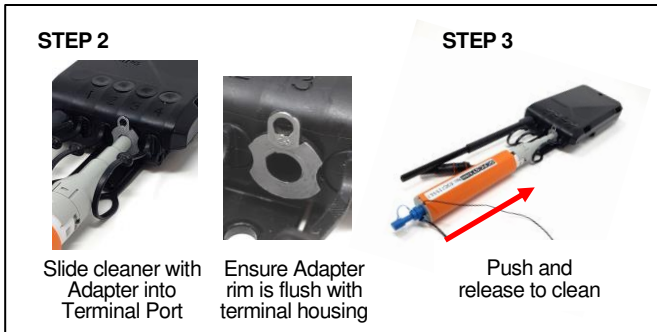


Figure 4. Cleaning Pushlok terminals

Cleaning ferrules with no optical adapter, Figure 5

- ① Place ATTACHMENT on cleaner GUIDE.
- ② Place attachment onto the ferrule. Push cleaner HANDLE fully and release (do not rotate the handle).

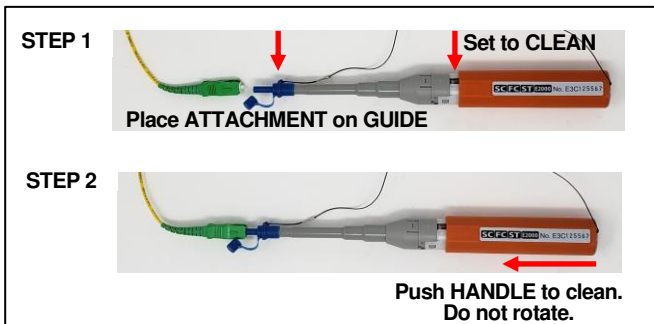


Figure 5. Cleaning ferrule with no optical adapter

Cleaning ferrules with optical adapter, Figure 6.

- ① Place ATTACHMENT on end of cleaner HANDLE.
- ② Insert into the optical adapter. Push cleaner HANDLE fully and release (do not rotate the handle).

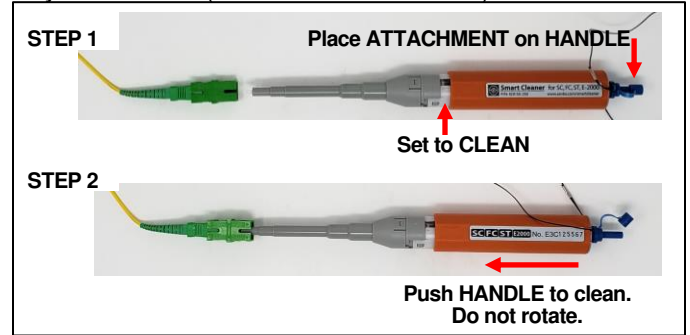


Figure 6. Cleaning ferrules in bulkhead adapters

Replacing Cleaner Cartridge, Figure 7

Cartridges may be replaced up to 3 times per handle.

- ① Place ATTACHMENT on end of cleaner HANDLE.
- ② Twist HANDLE to align ARROWS to LOCK.
- ③ Grip gray GUIDE and HANDLE and pull apart.
- ④ Push replacement GUIDE cartridge into HANDLE, aligning TAB BUTTON and TAB HOLE.

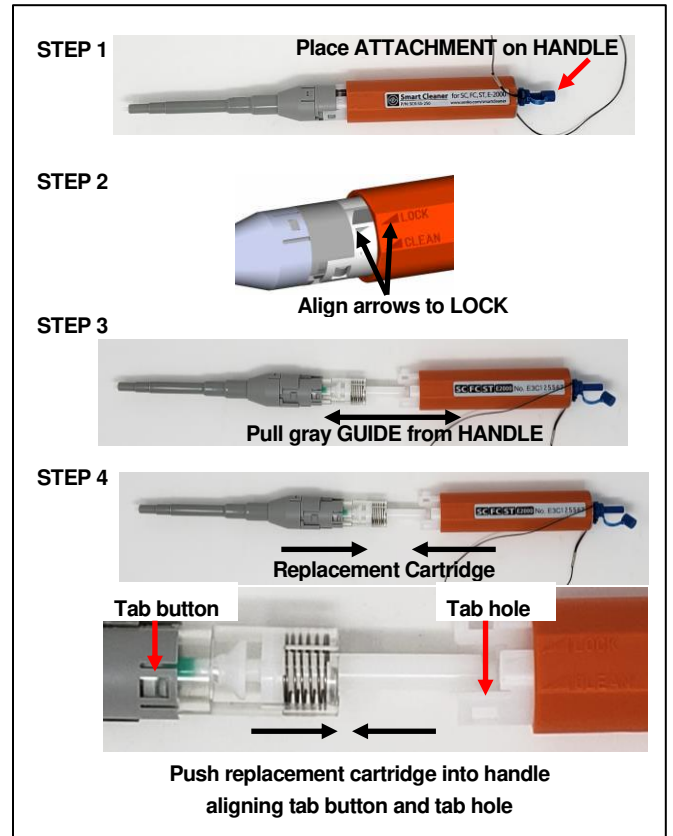


Figure 7. Replacing cleaner cartridge