

# Fiber Wall Plate

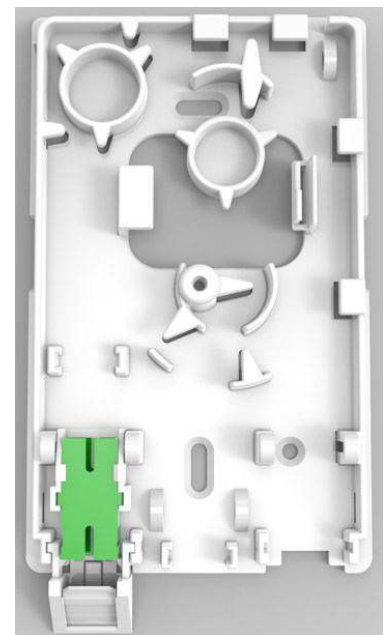
*Provides fiber demarcation point for home, apartment and office*



Engenuity Fiber Wall Plates provide a demarcation point inside the home, office or apartment. Integral bend radius provides safe fiber routing and allows for slack storage outside of the wall cavity. Compact in size yet feature rich makes this an ideal wall plate for FTTH application.

## FEATURES

- Available with SC/APC shuttered adapter for protection of laser light or un-shuttered
- Option for 1 or 2 port unit
- Unique pivoting adapter holder that allows cleaning and inspection without disconnecting feeder fiber
- Visual Proper Connection Indication
- Integral slack storage with bend radius control for fiber routing
- Feeder cable entry from rear, top or bottom; accommodates up to 4.8mm cable
- Stores up to 48 inch of fiber slack
- Mounts directly on wall or single gang junction box
- Hardware-free, snap-on cover



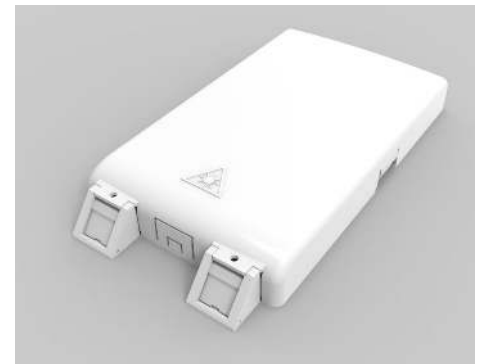
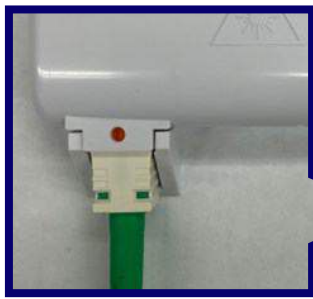
WP-01SXX-W (shown)

HOME / PREMISE



## SPECIFICATION

<b>Material</b>	Impact Resistant Plastic, Bright White color
<b>Performance</b>	Adapter; GR-326-CORE
<b>Application</b>	Indoor
<b>Dimension</b>	5.25" L x 3.2" W x 0.75" D



Visual Proper Connection Indication: Using Enginuity's Shuttered Jumper with our wall plate, the Red Dot indicator assures proper fiber connection

WP-01S01S-W: 2-Port Version (shown)

## ORDERING INFORMATION

Enginuity Part #	Description
WP-01XX-W	Wall Plate, SC/APC on left side, White
WP-01SXX-W	Wall Plate, Shuttered SC/APC on left side, White
WP-0101-W	Wall Plate, SC/APC on left and right side, White
WP-01S01S-W	Wall Plate, Shuttered SC/APC on left and right side, White
WP-01SXX-W1	Wall Plate, SC/APC Integrated Shuttered on left side, 900µm Fiber Pigtail, White

\*Contact your Enginuity representative for other configurations