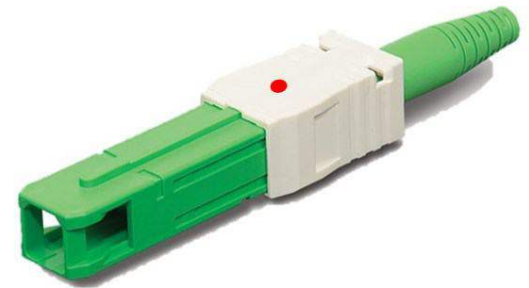


Shuttered Fiber Jumper

Provides fiber connectivity in FTTX Network



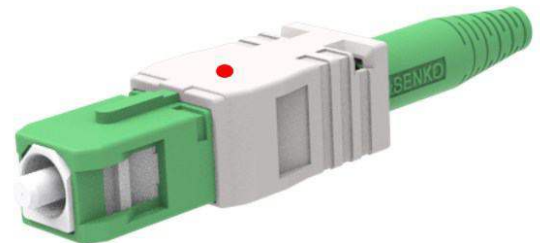
Enginuity Shuttered Fiber Jumper has a internal safety shutter to prevent accidental light transmittance and dust entry while protecting the ferrule end face. This provides the highest level of eye safety when disconnecting the connector. Ideal for applications where the user may be untrained or connecting to energized equipment. Unique red dot provides visual proper connection indicator when used with our Fiber Wall Plate.



Shutter Before Mating

FEATURES

- Shuttered connector for protection of laser light
- Singlemode SC/APC—SC/APC connection
- Low bend radius fiber; ITU-T G.657.B3
- Visual Proper Connection Indication when used on our wall plate
- 3mm jacketing
- High quality, low insertion loss
- Compliant with IEC 61754-4



Shutter After Mating

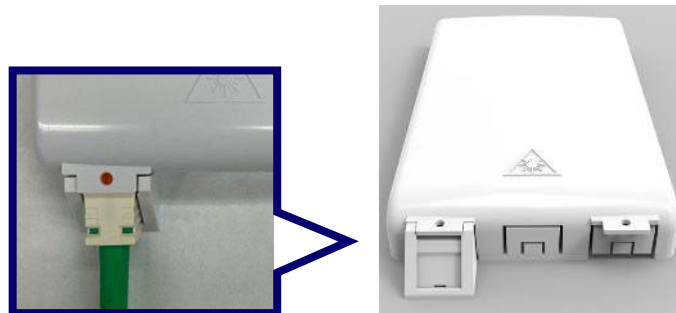


Shuttered Fiber Jumper

SPECIFICATION

Durability	500 matings per TIA-568.3
Performance	GR-326-CORE
Application	Indoor
Ferrule Material	Zirconia
Typical Insertion Loss (dB)*	0.10
Max. Insertion Loss (dB)*	0.25
Typical Return Loss (dB)*	≥ 65

* IL against master jumper



Visual Proper Connection Indication: Using Enginuity's Shuttered Jumper with our wall plate, the Red Dot indicator assures proper fiber connection

ORDERING INFORMATION

Enginuity Part #	Description
ESFJ-SASAR1XM	Shuttered Jumper, SC/APC - SC/APC, 3mm, 1M, White
ESFJ-SASAR2XM	Shuttered Jumper, SC/APC - SC/APC, 3mm, 2M, White
ESFJ-SASAR3XM	Shuttered Jumper, SC/APC - SC/APC, 3mm, 3M, White
ESFJ-SASAR4XM	Shuttered Jumper, SC/APC - SC/APC, 3mm, 4.5M, White